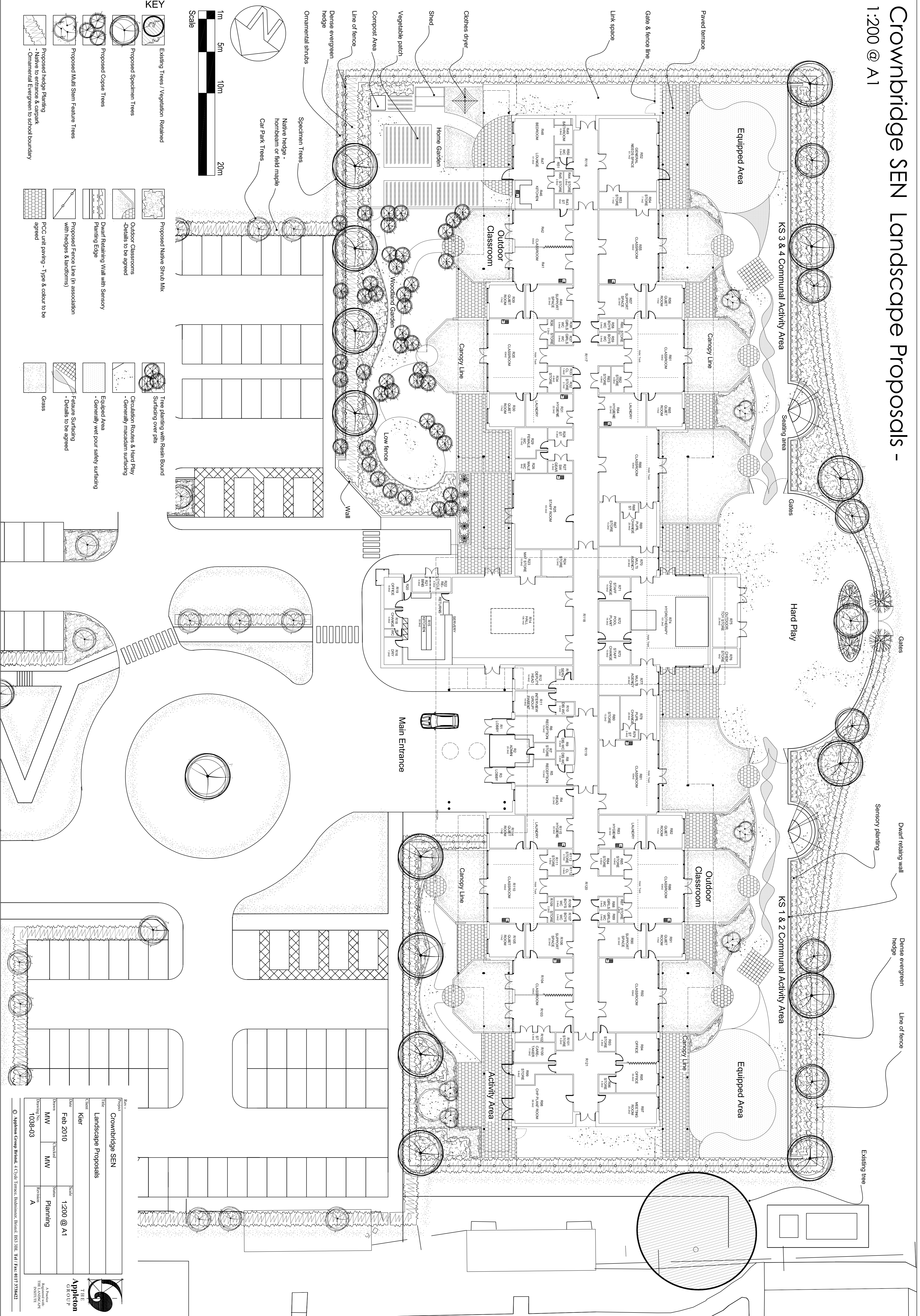


Crownbridge SEN Landscape Proposals -

1:200 @ A1



- KEY**
- Existing Trees / Vegetation Retained
 - Proposed Specimen Trees
 - Proposed Copse Trees
 - Proposed Multi Stem Feature Trees
 - Proposed hedge Planting
 - Native to entrance & carpark
 - Ornamental Evergreen to school boundary

- Proposed Native Shrub Mix
- Outdoor Classrooms - Details to be agreed
- Dwarf Retaining Wall with Sensory Planting Edge
- Proposed Fence Line (in association with hedges & landforms)
- PCC unit paving - Type & colour to be agreed

- Tree planting with Resin Bound Surfacing over pits
- Circulation Routes & Hard Play - Generally macadam surfacing
- Equipped Area - Generally wet pour safety surfacing
- Feature Surfacing - Details to be agreed
- Grass

Project	Crownbridge SEN
Title	Landscape Proposals
Client	Kier
Date	Feb 2010
Drawn	MW
Checked	MW
Scale	1:200 @ A1
Discipline	Planning
Working No.	1038-03
Version	A